

# Wayfair: California's Rules



## Live Webinar

Thursday, May 30, 2019  
10:00 a.m. to Noon PT

**\$97**

## On-Demand Webinar

Available by June 6, 2019

Designation	CPE Hours
CPA	2 Tax
CRTP (CTEC)	2 CA Tax
Attorney	1.5 General MCLE

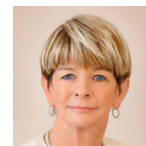
### Webinar features:

- 2 hours of CPE for one attendee
- Unlimited number of people may watch and listen on one computer and print course outline
- PDFs of reference manual and PowerPoint slides
- Add CPE for only \$20 per additional attendee\*

### With this two-hour course, you will:

- Discover how California doesn't conform to the Supreme Court's **Wayfair** decision:
  - Learn how the new \$500,000 threshold works
  - Find out which retailers must now collect district tax
- See how district tax is required based on both:
  - The old nexus rules
  - The new \$500,000 threshold
- Get a chart of sales tax requirements for other states when your clients ship goods into that state
- Learn what is considered tangible personal property for California purposes
- Uncover the rules for selling in a Marketplace — like Amazon or maybe an antique mall
- Prepare for the expensive, time-consuming challenge of computing the state, local and district taxes
- Follow the steps to prepare your return using CDTFA's website
- Find out when out-of-state retailers must register and collect sales tax on good shipped from California

### Presented by:



**Lynn Freer, EA**  
Lynn "Ms. California Tax" Freer is President of Spidell Publishing, Inc.® She works closely with all state tax agencies and is often consulted for input on policy decisions. She always has the inside information on what's happening at the state level because she devotes herself full time to analyzing, writing about, and teaching California tax law and procedures. Lynn speaks at Spidell's annual Federal and California Tax Update Seminars, as well as many other seminars and webinars.

### Satisfaction Guaranteed

If you are not completely satisfied with this course, we will provide you with a full refund, hassle-free.



Spidell Publishing, Inc. is registered with the National Association of State Boards of Accountancy (NASBA) as a sponsor of continuing professional education on the National Registry of CPE Sponsors. State Boards of Accountancy have the final authority on the acceptance of individual courses for CPE credit. Complaints regarding registered sponsors may be submitted to the National Registry of CPE Sponsors through its website: [www.nasbaregistry.org](http://www.nasbaregistry.org). This webinar is designed to meet the requirements for 2 hours of continuing education for the California Board of Accountancy. Level: Basic. Field of Study: Taxes. Delivery method: Group Internet-Based and Self-Study. For more information regarding administrative policies, such as complaints or refunds, contact Spidell Publishing at (714) 776-7850. There are no prerequisites or advance preparation required.

This webinar is designed to meet the requirements for the specified number of hours of continuing education. This webinar has been designed to meet the requirements of the California State Board of Accountancy; the California Bar Association; and the California Tax Education Council. This does not constitute an endorsement by these groups. The state boards of accountancy have final authority on the acceptance of individual courses for CPE credit. For more information regarding administrative policies such as complaints or refunds, contact Spidell Publishing at 714-776-7850. Spidell Publishing, Inc. has been approved by the California Tax Education Council to offer continuing education courses that count as credit towards the annual "continuing education" requirement imposed by the State of California for CTEC Registered Tax Preparers. A listing of additional requirements to renew tax preparer registration may be obtained by contacting CTEC at P.O. Box 2890, Sacramento, CA 95812-2890, or by phone at 877-850-2832, or on the internet at [www.CTEC.org](http://www.CTEC.org).



## Wayfair: California's Rules

- Live Webinar:** Thursday, May 30, 2019 — **\$97**  
 **On-Demand:** Available by June 6, 2019 — **\$97**

**Total \$** \_\_\_\_\_  Check # \_\_\_\_\_  
 Charge my:  MC  Visa  AmEx  Discover

Card Number \_\_\_\_\_  
 Billing ZIP \_\_\_\_\_ Exp. Date \_\_\_\_\_ Security Code \_\_\_\_\_  
 Signature \_\_\_\_\_

\*Additional CPE attendees must take an exam to receive credit. To register additional attendees call customer service at (714) 776-7850.

No refunds will be given after noon on the day before the webinar.

**You must have computer speakers to listen to this webinar.**

Name \_\_\_\_\_  
 Company Name \_\_\_\_\_  
 Address \_\_\_\_\_  
 City/State/ZIP \_\_\_\_\_  
 Phone \_\_\_\_\_ Fax \_\_\_\_\_  
 E-mail \_\_\_\_\_

We need your professional license/registration number(s) for continuing education credit.	
CPA No.	PTIN
CRTP No.	CA Bar No.

**source code: WEB19**

Revised 5-3-2019

Order online: [www.caltax.com](http://www.caltax.com)

Order by phone: (714) 776-7850

Order by fax: (714) 776-9906

Order by mail: P.O. Box 61044, Anaheim, CA 92803-6144